

The Rotary Club of Stone Mountain

Stone Mountain Views

Volume 3, Issue 19

Nov 17th, 2013



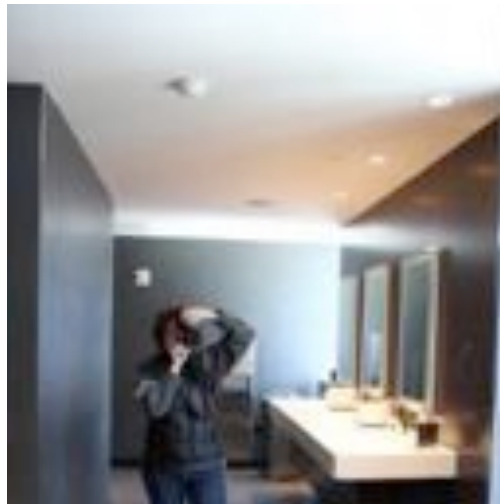
*Putting "Service Above Self" in Stone Mountain since 1965
100 % Paul Harris Fellow Club*

This Week's Program:

Lee Cuthbert

Location Specialist, State of Georgia Film Office

"The Rapid Growth of Film and TV Production in GA"



The Georgia Department of Economic Development (GDEcD) is the state's sales and marketing arm and lead agency for attracting new business investment, encouraging the expansion of existing industry and small businesses, developing new domestic and international markets, attracting tourists to Georgia, and promoting the state as a location for film, video, music and digital entertainment projects, as well as planning and mobilizing state resources for economic development.



*Rotary International President Ron D. Burton
District 6900 Governor Blake McBurney
Assistant Governor Bill Weeks
Rotary Club of Stone Mountain President Cynthia Edwards*



Rule of 85

The following is an explanation of the Rule of 85 and how to apply the rule to calculating membership attendance:

The RI Constitution defines Excused Membership as follows:

Article 9, Section 2 — Excused Absences. A member's absence shall be excused if (a) the absence complies with the conditions and under circumstances approved by the board. The board may excuse a member's absence for reasons that it considers to be good and sufficient. Such excused absences shall not extend for longer than twelve months. (b) the age of the member is 65 and above and the aggregate of the member's years of age and years of membership in one or more clubs is 85 years or more and the member has notified the club secretary in writing of the member's desire to be excused from attendance and the board has approved. (2010 MOP pp. 249-249)

Example:

Member John Doe will be 65 in June 2005 and he will have 20 years of service in October 2005. This qualifies him for exclusion from attendance starting in October 2005.

This will not affect his membership status in any way but will simply allow you as Club Secretary to exclude him from your attendance percent if he does not make a meeting. However, if he attends a meeting he should be counted toward your overall percentage.

Examples:

A club with 50 members, 10 of whom qualify and have been approved for the Rule of 85. At a given meeting, 36 of the non-Rule of 85 members were either in attendance, given credit for a board approved service activity or had a make-up in another club, and 8 of the 10 Rule of 85 members were in attendance. The percentage of attendance would be calculated as illustrated:

$$\frac{36 + 8}{40 + 8} = \frac{44}{48} = 91.66\%$$

$$40 + 8 \quad 48$$

A club with 35 members, 5 of whom qualify and have been approved for the Rule of 85. At a given meeting, 21 of the non-Rule of 85 members were either in attendance, given credit for a board approved service activity or had a make-up in another club, and all 5 of the Rule of 85 members were in attendance. The percentage of attendance would be calculated as illustrated

$$\frac{21 + 5}{30 + 5} = \frac{26}{35} = 74.29\%$$

$$30 + 5 \quad 35$$

A club with 40 members, 12 of whom qualify and have been approved for the Rule of 85. At a given meeting, 25 of the non-Rule of 85 members were either in attendance, given credit for a board approved service activity or had a make-up in another club, and none of the Rule of 85 members were in attendance. The percentage of attendance would be calculated as illustrated:

$$\frac{25 + 0}{28 + 0} = \frac{25}{28} = 89.29\%$$

$$28 + 0 \quad 28$$

What you may have missed last week...

Rotary Memories from Rule of 85 Members



PP Jerry Crane serves as moderator of the Actives group.



Chip Diamond addresses fellow Rotarian onlookers and shares his thoughts.



Myron Baines addresses Rotary peers



PP Harry Strack shares his scrapbook and newsletters from his term as well as memories from District Conferences and more.

What you may have missed last week...



PP Don Sampler shares his stories and perspective with the group



PP Jerry closes with some of his own personal Rotary memories.



President Cynthia Edwards presents Rotary M&M's to the speakers on behalf of the Rotary Club of Stone Mountain

Member's Vocational Moment

Submitted by George Miranda, DeKalb Medical Center

Low dose spiral CT screening for people at high risk for lung cancer is available at DeKalb Medical. The cost is \$149 for patients who pay cash. Only Blue Cross Blue Shield covers this screening (at least for now).

Persons at high risk are:

- (1) 55 years old to 75 years old; with a 30 pack-year smoking history; and quit smoking less than 15 years ago (or still smokes); OR
- (2) 50 years or older; 20 pack-year smoking history; and one risk factor: personal history of cancer; co-existing lung disease (e.g. emphysema); exposure to a carcinogenic substance (usually occupational exposure; e.g. asbestos, chromium, nickel, coal oil, soot, etc.)

Screening has not decreased death from smoking for people who are not high risk. However, for the high risk population, screening by CT scan has been shown to reduce death from lung cancer by 20 percent.

Information on lung cancer screening can be found on the website:

www.dekalbmedical.org (search for lung cancer screening) or call 404-501-LUNG.

ATTENTION! ATTENTION! ATTENTION!

Club Announcements

Rotary Club of Stone Mountain will hold its holiday party at the home of Bud Schooler on Saturday, December 14, 2013. Details will be sent out soon...

START TIME: Please arrive to the weekly meeting in enough time for you to socialize, go through the buffet and be seated by 12:14 p.m. **We will begin the meeting promptly at 12:15 p.m.**, so that we may end promptly at 1:15 p.m. At our request, the Smoke Rise Country Club has begun setting out the food by noon, which will assist us in starting our meetings as indicated.

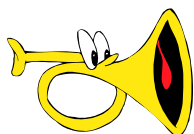
DUES & FEES: **Thank you** for working with our Assistant Treasurer, Harry Strack, to ensure that our individual financial accounts are up-to-date. Remember, currently, our personal dues and assessments provide the majority of the funding for our club's work and support to other organizations.

ATTENDANCE: **Our goal is to achieve 100% attendance with all members at each meeting.** If circumstances cause you to miss our weekly meeting, be sure to make up your meeting by attending another club's weekly meeting; by participating in a service project, Board meeting or committee meeting; or by making up online by accessing the Rotary International website. **All documentation confirming make-ups should be provided to George Miranda, Club Secretary within two weeks of the missed date.** Online make-up confirmations will be automatically sent to George.

MEMBERSHIP: **Continuously be on the lookout for potential Rotarians. Remember, our goal is to attract them, not just recruit them.** With this in mind, we are working to become more involved in assisting the organizations that we financially support. From publicizing our community service, people who have similar interests may be attracted to join our club. Begin to make a list of friends who are like you and/or have similar interests that fall in at least one of Rotary's six areas of focus, but who you have not asked to join you at a Rotary meeting. Invite them!



As one of our holiday service projects, our club will, again, support the Salvation Army's Angel Tree Program. PP Bill Hawes will provide us with names, genders, and ages of children for whom we may donate gifts. We may also purchase items that will be made available for children and seniors whose names may be submitted to the Salvation Army closer to the season's holidays.



Announcements

November 19th Set-up and take down.....Bebe Joyner and Margie Kersey
 November 26th Set-up and take down.....Lorrie King and Al Lipphardt
 December 3rd Set-up and take down.....Ron Lunsford and Frank Luton

Birthdays.....Dora Jackson 11/22

.....**Bill Witcher 11/23**

Anniversaries.....None

Rotary Club of Stone Mountain Upcoming Service Projects

Sue Kellogg Library

Just a reminder to members that collecting books for the Sue Kellogg Library is an ongoing project. Bring, Bring, Bring!!! Should you need assistance, please get in contact with Dora Jackson at the next meeting.

Upcoming Programs	
11/19/2013	Lee Cuthbert, Location Specialist, GA Dept of Economic Development - Film, Music and Entertainment, "The Rapid Growth of Film and TV Production in GA"
11/26/2013	Club Assembly
12/3/2013	Phyllis Miller, Executive Director, DeKalb Rape Crisis Center
12/10/2013	Ben Spivey and Christina Ottis, Amaji Health Information System
12/17/2013	Salvation Army Band (Holiday Program)
12/24/2013	No Meeting
12/31/2013	No Meeting
1/7/2013	TBD
1/14/2013	TBD
1/21/2013	TBD

About Us.....*The Friendliest Club in the South*

Mission Statement

Our mission is to distinguish the Rotary Club of Stone Mountain from other top clubs in District 6900 by consistently supporting the Object of Rotary through projects in each of the avenues of service; by eagerly extending the hand of fellowship; and by actions demonstrating our commitment to the Rotary ideal of "Service Above Self."

Our members are actively involved in the local community with programs and projects in the city of Stone Mountain and surrounding areas. Realizing that the boundary of the world's borders are ever growing, Stone Mountain Rotarians are also involved in humanitarian and educational projects in India, Central America, Europe, Asia, Africa – literally all over the world. Stone Mountain Rotarians can be counted on and called on. They honor commitment, value integrity, and unselfishly render "Service Above Self." Stone Mountain Rotarians are among Rotary's heroes!

We meet every Tuesday at noon at the Smoke Rise Country Club
4900 Chedworth Drive, Stone Mountain, GA 30087
(770) 908-2582

For more information about the Rotary Club of Stone Mountain, call 770-656-4363

2013 – 2014 Club Officers & Directors

President.....Cynthia Dorsey Edwards

President ElectChris Brand

President Nominee.....Donna Jensen

Secretary.....George Miranda

Treasurer.....PP Bud Schooler

Immediate Past PresidentPP Mark DiGiovanni

Sergeant-at-ArmsRon Lunsford

Club AdministrationPP William (Bill) Witcher

Club Service Projects.....Chris Brand

Community ServiceLorrie King

Vocational Service.....Irvine Weekes

International Service.....PP Bill Rosenfeld

MembershipAG Durl Jensen

FoundationPDG Casey Farmer

Public RelationsPP Leisa Smith

Newsletter.....Dwain Forbes

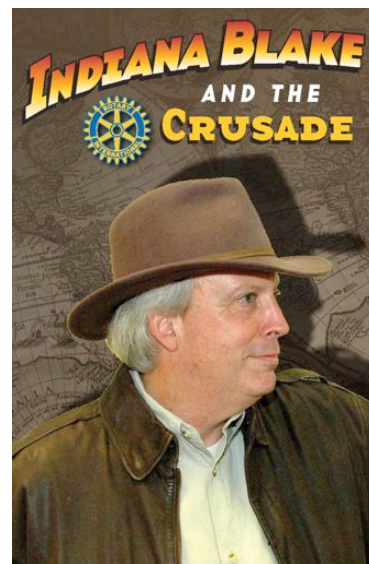
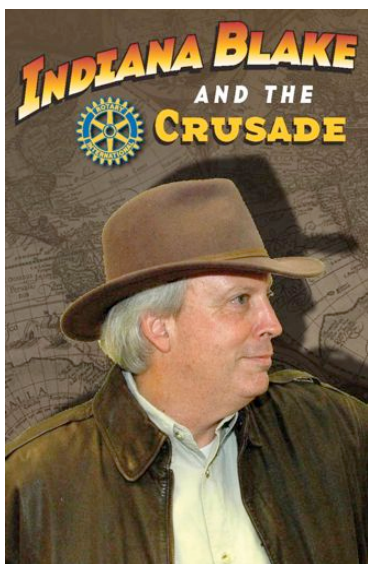
Youth Service.....Hikie Allen

Director at LargePP Bill Hawes

Director at LargePP Harry Strack

Director at LargePDG Margie Kersey

Presidential Advisor.....PDG Al Lipphardt



ROTARY CLUB
OF STONE
MOUNTAIN

P.O. Box 664
Stone Mountain, GA
30086

See us at:

www.stonemountainrotary.org

STONE MOUNTAIN VIEWS

Published Weekly by

The Rotary Club of Stone Mountain

Dwain T. Forbes, Editor
dwain.forbes@gmail.com
678-518-0688

